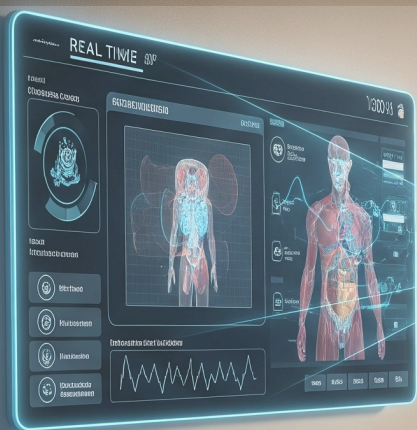




FORECASTING THE FUTURE
OF HOME CARE



HOME HEALTH



Nebraska
Home Care Association

OCTOBER
14-15,
2025

Nebraska Home Care Association Annual Conference Registration For Exhibitors & Sponsors

Younes Conference Center South
Kearney, Nebraska

[Click Here to
Register Online](#)



An application has been submitted to Iowa Western Community College, Iowa Board of Nursing Provider #6,
for Continuing Education Contact Hours.

CONFERENCE AGENDA

General
Session

Home Health
Track

Personal Care /
Private Duty Track

Hospice
Track

TUESDAY, OCTOBER 14, 2025

7:00 a.m. – 8:00 a.m.

CHECK-IN / REGISTRATION & CONTINENTAL BREAKFAST

8:00 a.m. – 9:30 a.m.

Welcome & Conference Kick-Off with Announcements

Managing Changes in Condition: Escalating Protocols & Managing Strategies
presented by Stacey Hallberg with Caretech Inc. &
Becky Schultze with Community Healthcare Partners

GENERAL SESSION -

BREAK 9:30 a.m. - 9:45 a.m.

Home Health

Personal Care /
Private Duty

Hospice

9:45 a.m. – 11:15 a.m.

9:30 a.m. – 11:30 a.m.

9:30 a.m. – 11:30 a.m.

**Federal Home Health Legislative
& Regulatory Updates**
presented by Dr. Steve Landers
CEO of the National
Alliance for Care at Home



**Integrating Home Care and
Care Management:
Models that MAXIMIZE Revenue
and Measure Client Success**
presented by Catherine Vergara
& Casey Rausin from
Care Around the Block

HOPE Tool Implementation
presented by Wellsky's
Katherine Morrison, RN

BREAK 11:15 a.m. - 11:30 a.m.

11:30 a.m. – 12:00 p.m.

**Questions & Answers with
Wellsky's Katherine Morrison, RN**

11:30 a.m. – 12:00 p.m.

**Nebraska Home Care Association
Annual Business Meeting & Awards Presentations**

12:00 p.m. – 1:15 p.m.

LUNCH & EXHIBITS

1:15 p.m. – 2:30 p.m.

**Artificial Intelligence in
Home Health**
presented by Ernie Lanace
with CareAlly

1:15 p.m. – 2:30 p.m.

Nebraska Labor Laws
presented by Derek Hyatte &
Rainy Penrod from the
Nebraska Dept. of Labor

1:15 p.m. – 2:30 p.m.

Federal Hospice Update
presented by Dr. Steve Landers,
CEO of the National
Alliance for Care at Home

BREAK 2:30 p.m. - 2:45 p.m.

2:45 p.m. – 4:00 p.m.

Value-Based Care
presented by Ernie Lanace
with CareAlly

2:45 p.m. – 4:00 p.m.

**Person Centered Care and
EVV / Medicaid Waiver Changes
with Authorizations, Documentation
and New Quality Program**
presented by Nebraska DHHS Leadership
Jenn Clark & Karen Houseman

2:45 p.m. – 4:00 p.m.

Hospice Insights
presented by Dr. Bob Bleicher
with Horisun Hospice

4:00 p.m. – 6:00 p.m.

EXHIBIT HALL & RECEPTION

with Gift Basket & Wine Pull Raffles to Benefit the
Nebraska Home Care Association Political Action Committee

CONFERENCE AGENDA

**General
Session**

**Home Health
Track**

**Personal Care /
Private Duty Track**

WEDNESDAY, OCTOBER 15, 2025

7:00 a.m. – 8:00 a.m.

CHECK-IN / REGISTRATION & CONTINENTAL BREAKFAST

8:00 a.m. – 9:30 a.m.

GENERAL SESSION

Assistive Technology and Integration

presented by Tobias Orr from the

Nebraska Department of Education Assistive Technology Partnership

Home Health

9:30 a.m. – 10:30 a.m.

Change Management

presented by Shelly Koch with
Good Samaritan Society Home Care

Personal Care / Private Duty

9:30 a.m. – 10:30 a.m.

**Marketing, Recruitment and
Retention Strategies**

presented by Amber Corbin with AmanaCare

BREAK 10:30 a.m. - 10:45 a.m.

10:45 a.m. – 12:00 p.m.

**CMS Regulations, CoPs, Star Ratings,
Quality Measures, Top Survey Deficiencies,
Regulations, CAHPS and
Quality Issues for Home Health**
presented by Jennifer Osburn from
Healthcare Provider Insights

10:45 a.m. – 12:00 p.m.

**Medication Reconciliation and
Compliance Management**
presented remotely by Kristina Niehoff with
Vanderbilt Home Care Services

12:00 p.m. – 1:30 p.m.

NETWORKING ROUNDTABLES with LUNCH

Travel Home

Purpose Statement

Connect with home health, home care, and hospice professionals from across Nebraska to network, learn, and receive the latest industry updates, including state and federal regulatory and legislative updates essential to your organization. Also, attend the Annual Business meeting for updates on how the association is serving you and join in recognizing award recipients.

Conflict of Interest Statement

The speakers have identified no actual, potential or perceived conflict of interest.
The Nurse Planners have identified no actual, potential or perceived conflict of interest.

NETWORKING RECEPTION & HOTEL

TUESDAY, OCTOBER 14, 2025

**Networking Reception Hosted At Upper Room Brewery
6:30 p.m. - 8:30 p.m.**

Join the Nebraska Home Care Association for the Annual Conference Networking Reception at

Upper Room Brewery
1540 W 56th Street, Suite D
Kearney, NE 68845

Join home health, home care, and hospice colleagues for this free networking event.

Complimentary beer and a brewery tour will be provided. Additional refreshments will also be available at Upper Room Brewery.



Hotel Accommodations – Monday, Oct. 13, & Tuesday, Oct. 14

Fairfield Inn & Suites Kearney
510 W. Talmadge Street
Kearney, NE, 68845

Fairfield Inn & Suites Kearney is providing accommodations for NHCA 2025 Annual Conference attendees.

Room rate is \$144.95/night, plus any applicable state or municipal taxes, fees, or assessments.

To reserve a room call (308) 236-4200 and ask for a room in the **NHCA Annual Conference** room block.

The number of rooms are limited and the room block is available until **September 16th**, so book now.



Fairfield Inn & Suites - Kearney, Nebraska
Book by September 16th for Discount Rate

REGISTRATION

Nebraska Home Care Association 2025 Annual Conference OCTOBER 14-15, 2025

Exhibitor & Sponsor Registration Form

Younes Conference Center South, 707 W. Talmadge Road, Kearney, NE, 68845

Agency/Organization/Company Name: _____

Address: _____

City, State, Zip: _____ Phone: _____

Emergency Contact Name: _____ Phone: _____

ANNUAL CONFERENCE EXHIBITOR REGISTRATION FEES

\$2,000 Sponsorship Level:

☐ Nebraska Home Care Association 2025-26 Annual Sponsor - \$2,000

Exhibitor Registration Fees without sponsorship:

☐ Nebraska Home Care Association Member Fee - \$450

☐ Prospective Member Fee - \$750

Exhibit fee includes one (1) 6-foot table, 2 chairs, breaks, Exhibit Hall reception and Annual Business Meeting Luncheon for up to two (2) representatives from your company/organization, and attendance at the conference educational sessions (if seating is available). Continuing Education hours require an additional fee.

Exhibitors will be recognized during announcements at the conference, in *NewsPulse* (electronic newsletter), Annual Conference web page, social media, in on-site materials and on TV display at the conference.

Exhibitors will also get an opportunity to make a presentation, up to 5 minutes, to promote the latest products and services during the Exhibit Hall & Reception.

If your company wishes to send more than two representatives, the additional cost is \$225 per attendee.

☐ Additional Representative(s): \$225 X _____

Name and Email Address: _____

Name and Email Address: _____

Exhibitor Needs:

☐ I will need electrical power for my display - No Charge. Please provide your own extension cord.

☐ Other requests (please specify): _____

Annual Business Meeting Lunch Option (select one of the following options – the registration fee includes lunch):

☐ I will attend the Tues. Oct. 14 lunch. Special dietary requests, food allergies: _____

☐ I will not be attending the lunch.

Door Prize Giveaway

If you would like to present a door prize or contribute to the NHCA PAC fundraiser by donating a gift basket or bottle of wine for raffles, please list the item(s) below and bring it to the registration table by 3 p.m. on Tuesday, October 14, 2025.

You will be invited to draw the winner's name and present your donation to the recipient.

☐ Yes, I would like to participate in the raffle drawing(s) - ☐ Door Prize ☐ Gift Basket ☐ Wine Pull

Description of item(s): _____

REGISTRATION

Nebraska Home Care Association 2025 Annual Conference October 14-15, 2025, Exhibitor & Sponsor Registration Form

Bags for Conference Attendees

Every attendee and session presenter will receive an attendee bag. The bags must be strong enough to hold up to five (5) pounds of material. As the exclusive bag sponsor, your company/organization will be responsible for ordering and shipping the bags to the Nebraska Home Care Association office in advance of the conference. Shipping instructions will be provided. You will also be recognized on the conference web page, on social media and through announcements and signage at the conference.

☐ Bags for Conference Attendees - \$200

Folders for Conference Attendees

Every attendee and session presenter will receive a folder with their name badge and materials. As the exclusive folder sponsor, your company/organization will be responsible for ordering and shipping the folders to the office of the Nebraska Home Care Association in advance of the conference. Shipping instructions will be provided. You will also be recognized on the conference web page, on social media and through announcements and signage at the conference.

☐ Folders for Conference Attendees - \$200

Badges and Lanyards for Conference Attendees

Your company/organization logo will be placed on all attendee badges and lanyards that hold the attendees' and speakers' name badges. As the exclusive badge/ lanyard sponsor, your company/organization will be responsible for providing its logo to the Nebraska Home Care Association office for printing on the badges and lanyards. You will also be recognized on the conference web page, on social media and through announcements and signage at the conference.

☐ Badges and Lanyards for Conference Attendees - \$300

Sponsor a Session

Select a session or multiple sessions to sponsor. Following registration, you will be contacted to provide information on which session(s) you would like to sponsor. Sponsorships are made on a first registration, first preference basis.

☐ Sponsor a Session - \$150 X _____ Number of Sessions Session(s) Requested: _____

Conference Packet Insert

You may choose to purchase and place an insert in the attendee conference packet.

Inserts are due by September 30, 2025.

Please mail them to Nebraska Home Care Association, 3901 Normal Blvd., Suite 100, Lincoln, NE 68506.

☐ Nebraska Home Care Association Member Rate: \$100 per insert

☐ Prospective Member Rate: \$200 per insert

Continuing Education

\$5 for each Representative wanting to earn nursing contact hours (CE) X _____ = \$ _____

Grand Total of Fees: \$ _____

Payment Methods

☐ Check – Print this form, fill it out and send to the Nebraska Home Care Association, 3901 Normal Blvd., Suite 100, Lincoln, NE 68506 with a check payable to the association.

☐ Credit Card - [Click here to register/pay online.](#)

When you provide a check as payment, you authorize us either to use information from your check to make a one-time electronic fund transfer from your account or to process the payment as a check transaction. When we use information from your check to make an electronic fund transfer, funds may be withdrawn from your account as soon as the same day we receive your payment, and you will not receive your check back from your financial institution.